

**The Barons
St Margarets Village
TW1 2AN**

£735,000

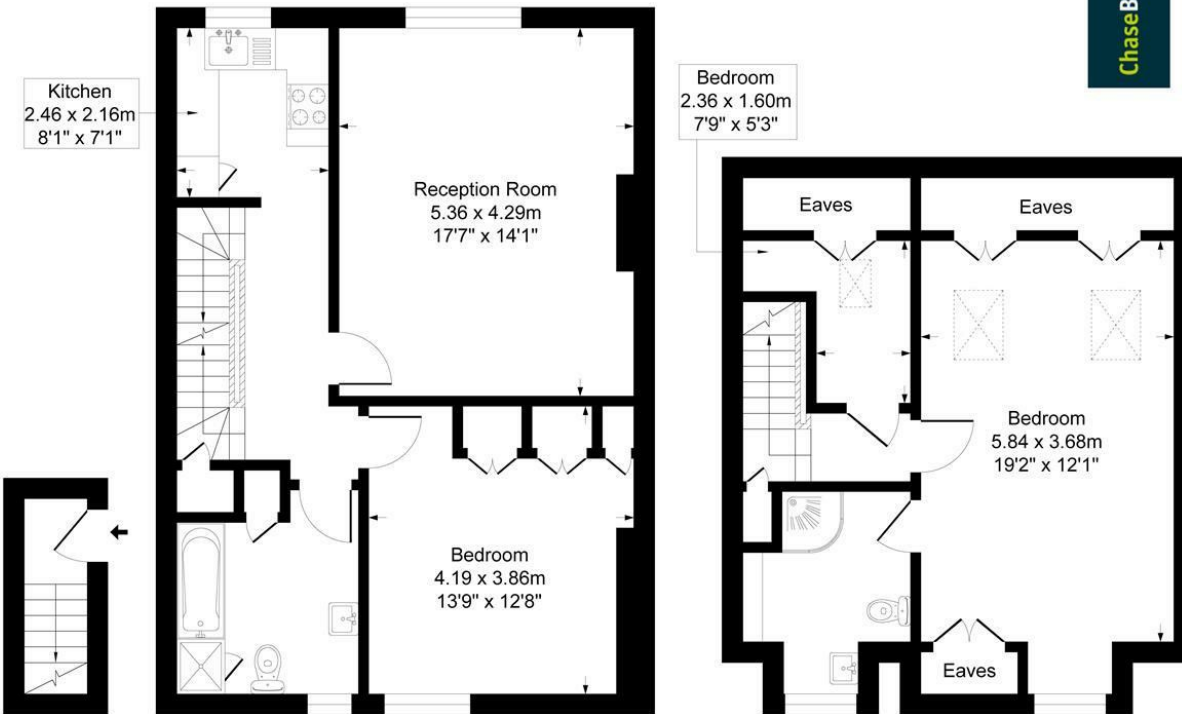
ChaseBuchanan



The Barons TW1

Approx. Gross Internal Floor Area
102.9 Sq M - 1108 Sq Ft

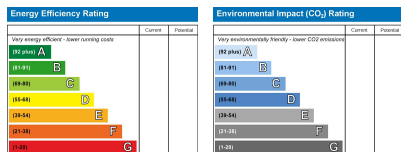
ChaseBuchanan



First Floor
Approximate Floor Area
695.02 sq.ft
(64.57 sq.m)

Second Floor
Approximate Floor Area
413.42 sq.ft
(38.40 sq.m)

Illustration for identification purposes only, measurements are approximate, not to scale.



Care has been taken in the preparation of these particulars, however, their accuracy is not guaranteed and they do not form part of any contract. Measurements stated must be considered maximum.

- Viewings accompanied by Chase Buchanan
- Split level apartment
- Off street parking
- over 1100 sqft
- Excellent condition
- Two/Three bedrooms
- Long lease
- Popular terrace
- Close to Station
- Two bathrooms

Situated in a highly sought-after terrace in the heart of St Margarets Village, this stunning split level two/three bedroom Victorian conversion apartment is offered the marketing in excellent condition and boasts over 1100 sqft of accommodation.

The property currently comprises a large reception room, a separate modern kitchen, large double bedroom and a modern bathroom. The top floor has been cleverly converted to offer another large double bedroom with ensuite shower room, plus a further study/storage room.

The building comes with off street parking on a first come first serve basis, a very long lease and full vacant possession.

An appointment to view is highly recommended via the vendor's sole agent Chase Buchanan at the earliest opportunity.

EPC - TBC

For more information or to book a viewing, please contact:

020 8744 2434

ChaseBuchanan

124 St Margarets Road, St Margarets, TW1 2AA